

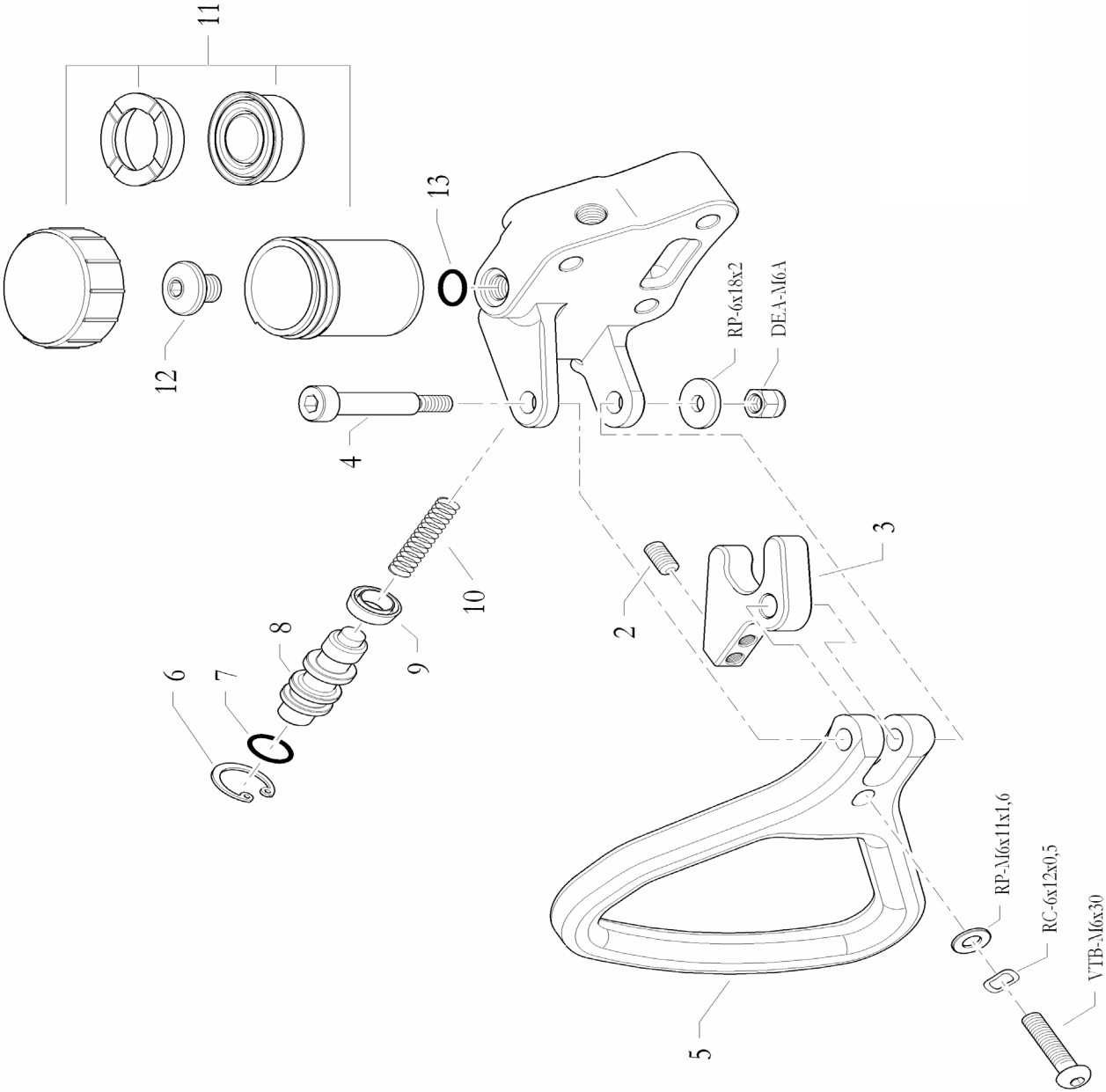


## BRAKE MASTER CYLINDER

Gr.m BIR086

POS	CODE	DESCRIPTION	C28-Y	RY30-S8	TRY-III	TIA-IV	Y30L	希望小売価格 (税別)
1	10.6406.00-NE	MASTER CYLINDER 19/B LD,ASSY.						16,000
2	20.4901.18	PUMPING MASTER CYLINDER 19/B						1,200
3	40.6377.00	GROMMET OR 13,95×2,62 EPDM						100
4	40.3738.00	GROMMET OR 15,60×1,78 EPDM						100
5	20.4887.20	RUBBER PROTECTION FOR BRAKE PUMP						550
6	20.3256.06	SPRING FOR MASTER CYLINDER 19						520
7	20.1554.06	SINGLE PUMP LEVER 19/22						800
8	20.7043.06	PIN TC 5×23,5						300
9	40.5182.00	SPLIT PIN 1,5×12 UNI 1336						25
10	40.7072.00	WASHER 5×9×0,5						30
11	AAI-22	CIRCLIP UNI 7437						60
12	40.4270.00	CYLINDRICAL CAP						560
13	20.1859.18	PUMP COVER						350
14	20.0873.06	PIN 5×15						250
15	40.0217.00	CIRCLIP 3,1×11×1						100

1

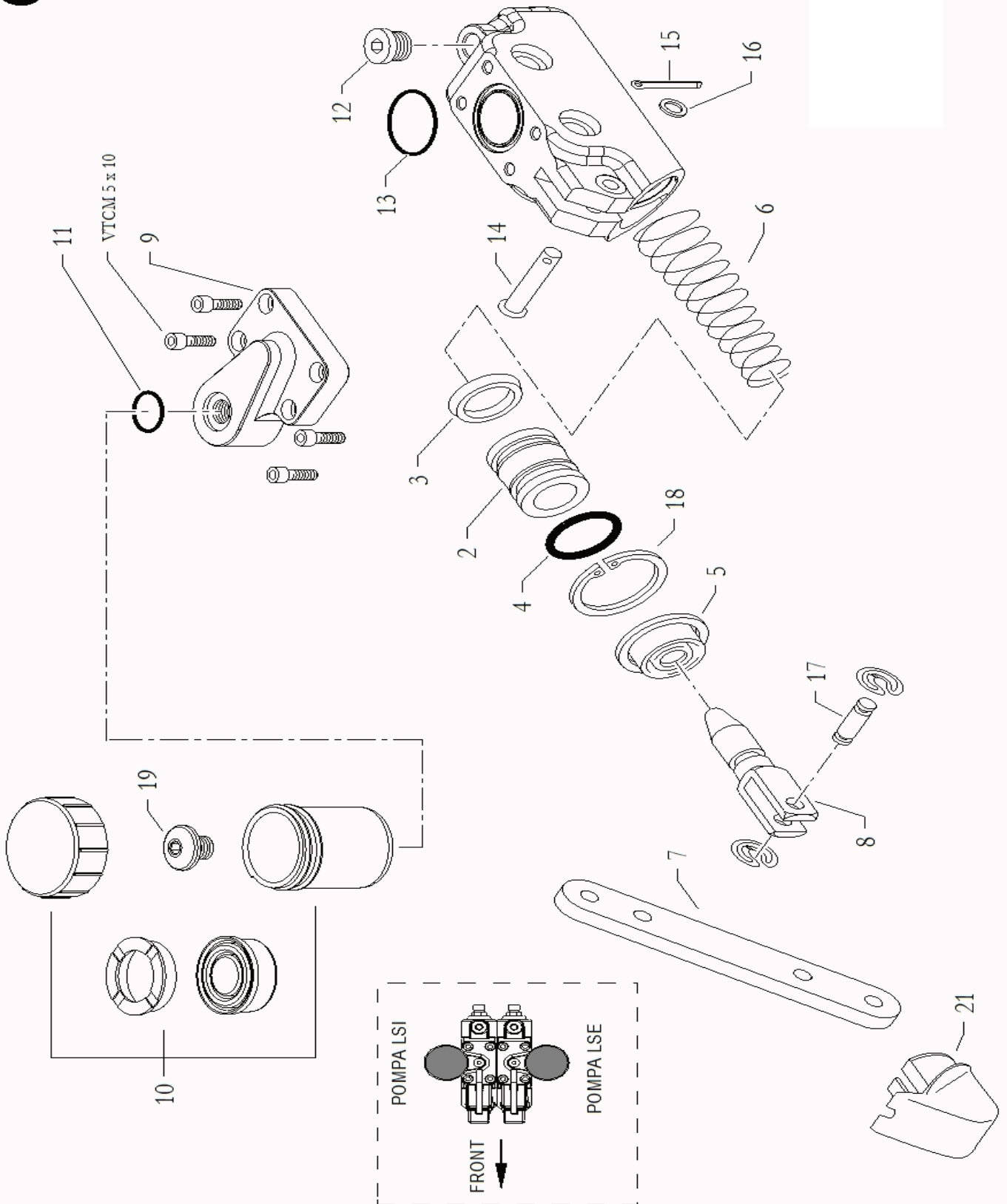


## BRAKE MASTER CYLINDER 16MRR

Gr.m BIR086MRR

POS	CODE	DESCRIPTION	C28-Y	RY30-S8	TRY-III	TIA-IV	Y30L	希望小売価格 (税別)
1	10.10631.00-NE	MASTER CYLINDER 16MRR ASSY.						42,000
2	40.8655.00	DOWEL 6×12						100
3	20.10550.10-DX	SUPPORT PUMP LEVER 16 MRR						3,200
4	40.10553.00	SPINDLE AXLE SCREW M6-8×35						600
5	20.10547.10-NE	PUMP LEVER 16 MRR						12,000
6	AAI-18-JV	CIRCLIP JV						100
7	40.11090.00	SEAL OR 2050 D.I. 12,42×1,78 EPDM						100
8	20.10552.10	PUMPING MASTER CYLINDER 16 MRR						1,200
9	40.10549.00	LIP SEAL 16 EPDM						450
10	20.10642.06	SPRING,MASTER CYLINDER 16 MRR						800
11	10.10525.00	TANK ASSEMBLY MASTER CYLINDER 22 SRR						1,400
12	20.8353.06	PETROL TANK FIXING SCREWS						700
13	40.4923.00	GROMMET OR 10,82×1,78 EPDM						200

1



## BRAKE MASTER CYLINDER 22SRR

Gr.m BIR086LDI

POS	CODE	DESCRIPTION	C28-Y	RY30-S8	TRY-III	TIA-IV	Y30L	希望小売価格 (税別)
1	10.10527.00-NE	MASTER CYLINDER 22SRR LDI ASSY.	*	*	*	*	*	24,000
2	20.11380.10-DX	PISTON MASTER CYLINDER 22 SR EVO	*	*	*	*	*	2,600
3	40.1638.00	LIP SEAL 22 EPDM	*	*	*	*	*	450
4	40.4945.00	SEAL OR 17,86×2,62 EPDM	*	*	*	*	*	200
5	20.4887.20	RUBBER PROTECTION FOR BRAKE PUMP	*	*	*	*	*	550
6	20.4913.06	SPRING,MASTER CYLINDER 22 SR	*	*	*	*	*	520
7	20.1554.06	SINGLE PUMP LEVER 19/22	*	*	*	*	*	800
8	20.4900.06	MASTER CYLINDER FORK B	*	*	*	*	*	1,300
9	20.10526.10-NE	COVER MASTER CYLINDER 22 SRR	*	*	*	*	*	3,800
10	10.10525.00	TANK ASSEMBLY MASTER CYLINDER 22 SRR	*	*	*	*	*	1,400
11	40.4923.00	GROMMET OR 10,82×1,78 EPDM	*	*	*	*	*	200
12	40.4270.00	CYLINDRICAL CAP	*	*	*	*	*	560
13	40.4924.00	GROMMET OR 21,95×1,78 EPDM	*	*	*	*	*	200
14	20.7043.06	PIN TC 5×23,5	*	*	*	*	*	300
15	40.5182.00	SPLIT PIN 1,5×12 UNI 1336	*	*	*	*	*	25
16	40.7072.00	WASHER 5×9×0,5	*	*	*	*	*	30
17	20.0873.06	PIN 5×15	*	*	*	*	*	250
18	AAI-24	CIRCLIP UNI 7437	*	*	*	*	*	100
19	20.8353.06	PETROL TANK FIXING SCREWS	*	*	*	*	*	700
21	20.1859.18	PUMP COVER	*	*	*	*	*	350