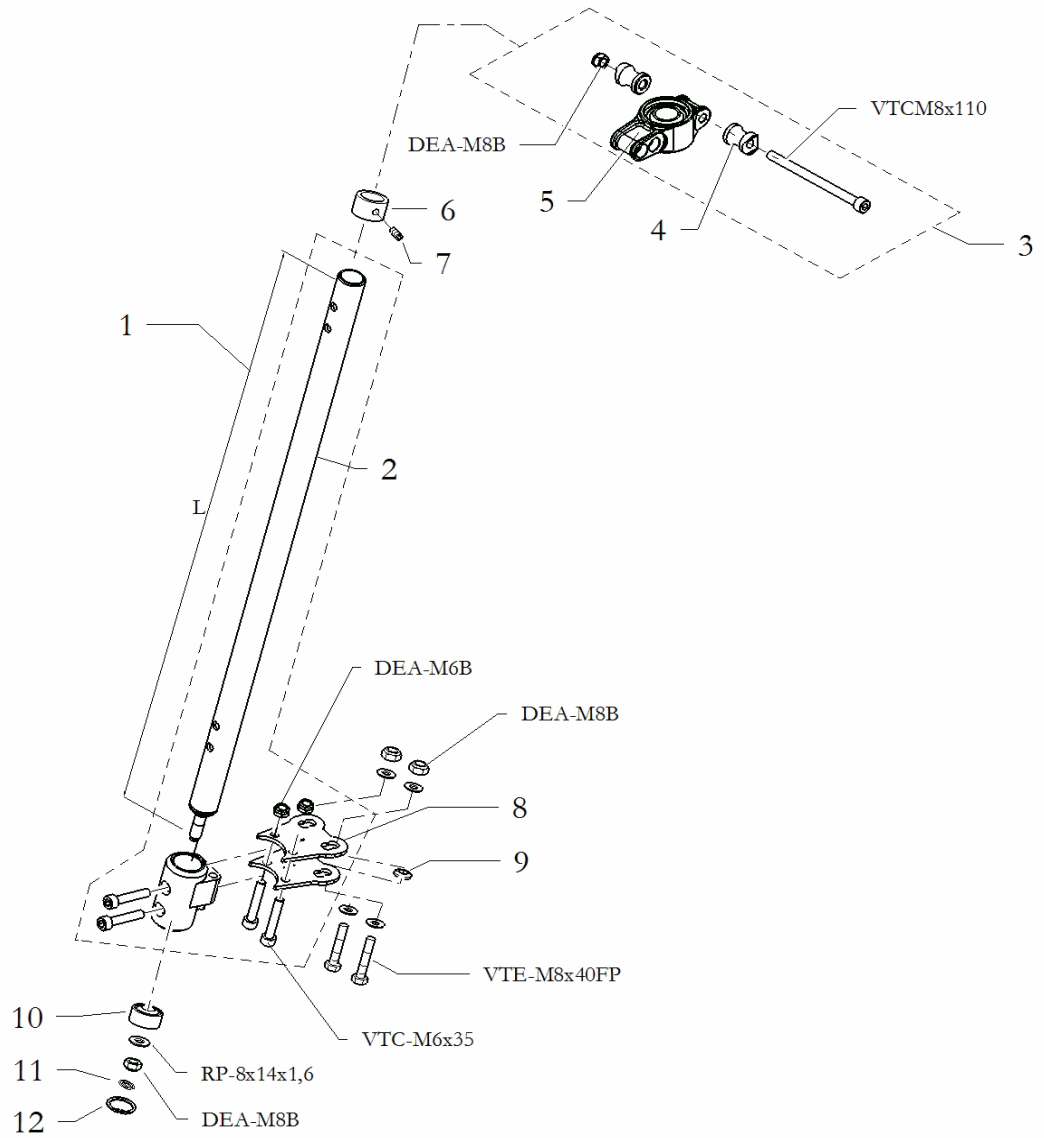


STEERING COLUMNS

Gr. m BIR010

POS	CODE	DESCRIPTION	C28-S14	RY30-S14	L28C-Y	B25-X	TIA-IV	Y30M	希望小売価格 (税別)
1	10.4930.00	STEERING COLUMN B25				*			7,400
2	10.0481.00	STEERING COLUMN PROMO					*		8,700
2	10.0780.00	STEERING COLUMN MINI			*				8,700
3	10.12274.00	STEERING COLUMN MINI RACING	*						8,700
3	10.7297.00	STEERING COLUMN RACING L490						*	8,700
3	10.13717.00	STEERING COLUMN RACING L520							8,700
4	10.1643.00	STEERING COLUMN SUPPORT ASSY.100	*		*				7,800
5	10.6768.00	STEERING COLUMN SUPPORT ASSY.KG					*	*	3,100
6	10.5814.00	NYLON SUPP FOR STEER.COLUMN .L75			*				2,400
7	10.2611.00	NYLON SUPP.FOR STEERING COLUMN				*	*	*	1,900
8	10.13977.00	STEERING COLUMN SUPPORT ASSY.S10		*					3,100
9	20.3848.10-NE	HALF SUPP.L35 STEERING COLUMN	*		*				2,700
10	20.0261.10	STOP RING FOR STEERING COLUMN	*	*	*		*	*	1,100
11	40.0578.00	BALL JOINT M8	*	*	*	*	*	*	2,200
12	40.0217.00	CIRCLIP 3,1 × 11 × 1	*	*	*	*	*	*	110
13	AAI-22	CIRCLIP UNI 7437	*	*	*	*	*	*	70
14	20.7336.10-LU	SPACER 8 × 20 × 15					*	*	870
15	20.1900.06	SPACER UNIBOOL	*	*	*	*	*	*	330
16	40.3684.00	DOWEL 6 × 6 DIN 913	*	*	*		*	*	110
17	20.13233.06	SPACER STEERING WHEEL ADJUSTABLE	*	*					870



STEERING COLUMNS

Gr.m BIR010A

POS	CODE	DESCRIPTION	C28-S14	RY30-S14	L28C-Y	B25-X	TIA-IV	Y30M	希望小売価格 (税別)
1	10.14929.00	STEERING COLUMN RACING HI TECH L520		*					13,000
1	10.14946.00	STEERING COLUMN RACING HI TECH L490		*					13,000
2	10.14930.00	STEM STEERING COLIMN RACING HI TECH L520		*					7,100
2	10.14945.00	STEM STEERING COLIMN RACING HI TECH L490		*					7,100
3	10.15299.00	GROUP SUPPORT COLUMN d40.ASSY	*	*					13,400
4	20.13233.06	SPACER STEERING WHEEL ADJUSTABLE	*	*					870
5	10.14994.00	STEERING COLUMN SUPPORT d40.ASSY	*	*					11,700
6	20.0261.10-LU	STOP RING FOR STEERING COLUMN	*	*	*	*	*	*	1,100
7	40.3684.00	DOWEL 6×6 DIN 913	*	*	*	*	*	*	110
8	20.14933.06	STEERING COLUMN PLATE no,1		*					1,100
9	20.14991.06	STEERING COLUMN PLATE no,2		*					1,100
10	40.0578.00	BALL JOINT M8	*	*	*	*	*	*	2,200
11	40.0217.00	CIRCLIP 3,1×11×1	*	*	*	*	*	*	110
12	AAI-22	CIRCLIP UNI 7437	*	*	*	*	*	*	70